

NATURE NOTEBOOK

Spring 2010

In This Issue:

- Donation Drive
- Bourbon Dinner
- Summer Camps
- Library & Needs
- Our Sponsors
- Board & Friends
- Upcoming Events
- Plant List
- Membership Form

Louisville Nature Center

3745 Illinois Avenue
Louisville, KY 40213

Phone: (502) 458-1328
Fax: (502) 458-0232

E-mail: LNC@bellsouth.net

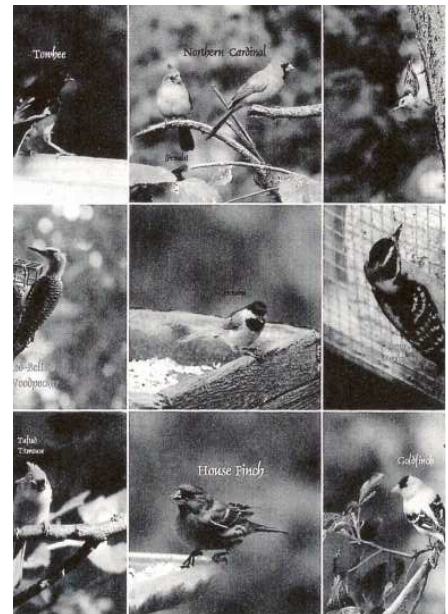
LNC Annual Donation Drive a Success

The Nature Center had one of its most successful donation drives ever this year with total contributions of over \$10,000. A major factor in our success was support of local businesses within the community. In spite of rough economic times, our businesses and individual supporters, once again, exhibited their support of nature education and stewardship of an urban forest. Thanks to our community of friends, LNC was able to:

- Offer new learning opportunities to thousands of students in Jefferson County and surrounding areas
- Maintain safe forest trails for recreational enjoyment throughout last winters destructive storm season
- Manage the bird blind that provides visitors with a close up view of many species of birds and other wildlife
- Extend hours of operation for the educational building and library to six days a week, 9am to 4pm and add additional evening hours for special family and adult programs
- Maintain a fountain and several attractive gardens on the grounds

The Nature Center is a valuable resource for the community. The board and staff appreciate the financial support of so many committed folks. We want to acknowledge the volunteers who have been invaluable throughout the year by providing thousands of hours of work. Their unique skills and in-depth knowledge of the world of nature have made LNC what it is today. A special thanks goes out to volunteer, **Edison Farmer**, for his photographs and contribution of time and materials for our donation drive mailer.

LNC Board and Staff



Birds of the
 Louisville Nature Center

Limestone Restaurant
Welcomes

Friends of the
LOUISVILLE NATURE CENTER
MONDAY - MARCH 15TH, 2010

SECOND ANNUAL BOURBON TASTING, DINNER AND AUCTION



RECEPTION AND SILENT AUCTION BEGIN AT 6:30 PM

BOURBON TASTING AT 7:30PM

MASTER DISTILLER, CHRIS MORRIS, WOODFORD RESERVE,
EXPLORES THE "THREE STYLES OF KENTUCKY WHISKEY"

DINNER

SELECTED AND PREPARED BY LIMESTONE CHEF AND OWNER
JIM GERHARDT

BOURBON FLAVORED DISHES WILL BE FEATURED

ALL PROCEEDS BENEFIT THE LOUISVILLE NATURE CENTER
COST: \$65 PER PERSON FOR LNC MEMBERS
\$85 PER PERSON FOR TABLES OF SIX OR MORE
\$75 PER PERSON FOR ALL OTHERS

RESERVATIONS REQUIRED: CALL 502-458-1328
TO RESERVE YOUR SPACE FOR THIS SPECIAL EVENT.
ALL MAJOR CREDIT CARDS ACCEPTED.

THE MISSION OF THE LOUISVILLE NATURE CENTER IS TO
PROMOTE NATURE EDUCATION AND ENHANCE OUR STEWARDSHIP. ALL ARE WELCOME.

The Nature Center is seeking sponsors to pledge donations or to provide auction items to help make the Bourbon fundraiser a success. Call 458-1328 for details.

Saturday, May 8th, 9am-4pm: Native Plant Sale & Garden Expo

This is an all day event featuring a variety of native plants from local nurseries, crafters, food distributors and businesses. We are very interested in attracting businesses that promote sustainable garden practices and/or wild habitat landscaping. Participation fees are as follows:

Native plant nurseries – No set up fee. 20% of vendor proceeds are donated to Louisville Nature Center.

Local businesses - \$50 per space. Vendor keeps all proceeds.

Crafters - \$30 per space. Vendor keeps all proceeds.



LNC Camp Application

Child's Last Name _____ First Name _____

Sex (circle): Male / Female Age _____ Birth date _____

Address _____ City _____ State _____ Zip _____

Phone # _____ Emergency # _____ Email _____

Health issues, Special Needs or request to be with a friend _____

Camp Name _____ Camp Date _____

I hereby authorize the Louisville Nature Center to take any steps to ensure my child's health in case of an emergency. I also authorize the Louisville Nature Center to use my child's name and/or photograph for education and public relations purposes.

In consideration of the Louisville Nature Center allowing my child to participate in this Louisville Nature Center Education Program ("Program"), I, for myself and my child, hereby waive and release the Louisville Nature Center, its officers, agents and employees, from any and all claims or causes of actions for injury, damage or loss to the person or property of my child while participating in the Program. I further hereby agree to indemnify, hold harmless and defend the Louisville Nature Center, its officers, agents and employees, from any and all losses, claims, or causes of action for injury, damage or loss in any way relating to or arising from any incidence arising out of my child's participation in the Program. This Waiver and Release is intended to be an express waiver of and release from any and all claims against the Louisville Nature Center, its officers, agents and employees, arising from my child's participating in the Program, including all claims or causes of action based upon the alleged negligence or gross negligence of the Louisville Nature Center, its agents, officers and employees.

Parent/Guardian Signature _____ Date _____

Amount Enclosed \$ _____ Check # _____

----- or -----

Credit Card MasterCard Visa Discover American Express

Acct. No. _____ Exp. Date _____

Signature _____

Print Name _____

Registration fee must accompany the registration form. Please make your check payable to the Louisville Nature Center. When registering more than one child, please send information on separate forms.

Mail to: Louisville Nature Center 3745 Illinois Ave, Louisville KY 40213 Fax: 502-458-0232

Louisville Nature Center Summer Camps

FUN OUTDOOR ADVENTURES

We have several **new** camps this year including one overnight adventure and one late night star gazers opportunity. Sign up by completing the application.

6/14-6/18 Young Explorers

9am-12pm, ages 4-6, Cost: LNC Members \$100/\$115

Who lives in the woods? We'll explore the trails and gardens as we look for animals, flowers and bugs that live in the woods.

6/14-6/18 Harry Potter: Nature's Magic

1pm-4pm, ages 8-12, Cost: LNC Members \$110/\$125

You won't need a spell book to discover how magical nature can be in this camp based on the book *Harry Potter and the Sorcerer's Stone*.

6/21-6/25 Harry Potter: Nature's Magic

1pm-4pm, ages 8-12, Cost: LNC Members \$110/\$125

You won't need a spell book to discover how magical nature can be in this camp based on the book *Harry Potter and the Sorcerer's Stone*.

6/28-6/30 Bug Hunters

9am-4pm, ages 6-12, Cost: LNC Members \$100/\$115

Have a creepy crawly time as we search for elusive insects in the woods and gardens!

7/7-7/9 Wilderness Survival

9am-4pm, ages 9-12 – 1 overnight, Cost: LNC Members \$160/\$170

What do you need for a walk in the woods? Come learn what to do with the things that you take with you and how to survive in an emergency.

7/12-7/16 Art Adventures

1pm-4pm, ages 6-9, Cost: LNC Members \$110/\$125

Put on your hiking boots and grab your paintbrushes for some exciting adventures at this art and nature camp! Join us for bird watching, bug finding, hiking in the preserve, as well as for working with paint, clay and other fun materials!

7/19-7/23 Young Explorers

9am-12pm, ages 4-6, Cost: LNC Members \$100/\$115

Join us for an up close, in-depth education on the tiny plants and insects that inhabit the forest. Through a series of games, crafts and forest activities, campers will see what is often missed on a normal hike through the woods.

7/21-7/23 Sky Gazers

1pm-4pm, ages 9-12 – 1 late night, Cost: LNC Members \$100/\$115

What's in the sky – day or night? Where, when and why do I look there? Come learn to be an observer of the worlds that are always just overhead.

7/26-7/30 Wild Art

1pm-4pm, ages 10-14, Cost: LNC Members \$110/\$125

Let the wilderness found at the Louisville Nature Center inspire you at this exciting art and nature camp! In addition to working with paint, clay, printmaking and other fun materials, we will also spend time in the preserve.

Track 'em, Smack 'em, and Roar

9am-4pm Session 1 June 21-25, Session 2 July 12-16, Session 3 July 26-30

The Louisville Tennis Center, the Louisville Nature Center and the Louisville Zoo will again be offering a week of non-stop excitement for children ages 8 - 12. Campers will be tracking native wildlife at the Louisville Nature Center, learning tennis skills on the courts of the Louisville Tennis Center, and visiting with the wild creatures at the Louisville Zoo. All three sessions are identical.

If your child has a tennis racket we suggest that he/she bring it. Each participant must bring a lunch and dress appropriately for outside play (tennis shoes are required).

Cost: Regular \$195; LNC or Zoo Members \$180

***For Track 'em...Roar camp only sign up on Zoo website www.louisvillezoo.org

LNC Library Gets Some Attention

Ann Rosa is a long time volunteer at the Nature Center. It would be impossible to list all the contributions she has made throughout the years. One of the most important has been her assistance with school programs. Ann is a retired school teacher so she knows a few things about students. She also is quite a supporter of the great outdoors, so she has taken many hikes in the preserve & has become quite familiar with the history of the land. She loves a challenge & always has great suggestions for coping with the unexpected when schools visit. She has ideas for holding the students' attention when nature studies have to take place indoors due to hazardous outdoor conditions. She has been around during the 90 degree plus temperatures of summer camps. One of her greatest skills is keeping it together when the unexpected occurs.

She recently took on a new challenge – sorting through all the new & old books in the LNC library. We have been fortunate to have received many donations this year and were running out of space. Also, there were many older books that no longer fit our needs. Ann sorted through everything, hauled the unneeded books to a used book store and exchanged those for a newer, more appropriate selection of books. She came up with some great suggestions for managing & maintaining the materials & resources in the library.

It will take a few weeks for us to catch up with her ideas. However, we are in the process of printing up labels for her book categories. We will be adding a computer in the library for folks to use with educational CDs and while doing library research. We hope to hold a story hour for younger children to expose them to some of the great new books Ann found.

We hope visitors will get in the habit of utilizing our library resource center when working on projects, or to obtain information on various nature re-work and dedication. Thanks to Ann for all of her hard



laptop and power point projector
gutters for the shed
heavy duty paper shredder
tall curio cabinet or display case
digital cameras
coffee pot
heavy duty stapler
second stall in restroom
bird blind sound system fix
update bird blind with air/heat, expansion
window blinds for large classroom
rocks for the gardens and pond
BlackEyed Susan, Verbena, phlox
kitchen and cleaning supplies
photo paper
poster board
sidewalk chalk
paper plates, cups, napkins
coffee, sugar, creamer
garden hose -50 ft
note pads
Avery 5160 labels
white modeling clay
construction paper
batteries - all sizes
flashlights
general office supplies – copy paper, pens, etc.
door mats
chipper
extension cord for laptop plug-in
tents
battery powered leaf blower & trimmer
front door shoe cleaner
short step ladder
PA system
snow shovel
old roller skates
particle board/chip board
children's fiction & children's bird books

Needs List

Bird feeders!
Flat screen monitor!
Books for the library!!

Thanks Donors!

2010/2011

Board Members

Rob Holtzmann
President

Phyllis Fitzgerald
Vice President

Ericka Makhlof
Treasurer

Perri Eason
Secretary

Maurice Berelowitz

Joe Chiles

Russell Cotton

Mark Eley

Pete Glauber

Carol Kaufmann

Ken Machtolff

Charlie Marsh

Lois McGrath

Melissa Minch

Herb Zimmerman

FRIENDS OF THE FOREST — 2010-2011

PLEASE SUPPORT THOSE WHO CARE AS MUCH ABOUT LNC AS YOU DO!

Limbwalker Tree Service, Inc.
901 Dumesnil St
Louisville KY 40203

Sandy's Pet Shop
1421 Hess Ln
Louisville KY 40217

St Francis High School
233 West Broadway
Louisville, KY 40202

The Louisville Zoo
1100 Trevilian Way
Louisville, KY 40213

Wild Bird Center of Louisville
Shelbyville Road Plaza #220
Louisville, KY 40207

ID&A
1700 S. Fifth Street
Louisville, KY 40208

Louisville Audubon Society
3745 Illinois Ave
Louisville, KY 40213

Bob Ray Company, Inc.
723 Lyndon Lane
Louisville KY 40222

Jason Wallace
Handyman Services & Remodels
639-6551

Chatham Facial Plastic Surgery
4001 Kresge Way, Ste. 310
Louisville, KY 40207

Councilman Jim King
District 10 & Metro Council Pres.
601 West Jefferson Street
Louisville, KY 40202

Metropolitan Sewer District
700 West Liberty
Louisville, KY 40203

Stock Yards Bank & Trust
4016 Poplar Level Road
Louisville, KY 40213

Budget Truck Rental
4330 Crittenden Drive
Louisville, KY

IN JOY SOLARIA
Buckner KY 40010
(502) 222-1967

GE Commercial & Industrial

Kroger
4009 Poplar Level Road
Louisville, KY

Jefferson Co. Extension
Master Gardeners
569-2344

C. E. and S. Foundation

Metro Parks
1297 Trevilian Way
Louisville, KY

Beckham Bird Club
P.O. Box 5301
Louisville, Kentucky 40255-0301
e-mail: beckhambird-club@gmail.com

Integra Properties, LLC
Residential & Commercial Painting
Bradley Berthold



Kentuckiana Region
1753 Harrison Spring Rd
Corydon, IN 47112
502-727-8945
812-734-0336

bberthold@integra-properties.net
www.integra-properties.net

Gault-Marsh
DEVELOPMENT

Charles P. Marsh
Partner

Gardiner Point Office Building
4011 Gardiner Point Drive/Suite 200
Louisville, KY 40213-1988

T: 502/451-1122
F: 502/451-0722
C: 502/551-0880
cmarsh@scgault.com
www.scgault.com

MEETINGS AT LNC

Ky Herpetological Society	http://www.kyherpsoc.org	Monthly on 2nd Sunday 6:00pm
KYANA Geological Society	http://www.kyanager.org	Monthly on 3rd Tuesday 7:00 pm
Derby City Fly Fishers	http://www.derbycityflyfishers.com	Monthly on 3rd Wednesday 7:00pm
KY Society of Natural History	http://www.ksnh.org	Monthly on 3rd Thursday 7:00pm
Louisville Rose Society	http://www.louisvillerosesociety.org/	Monthly on 4th Thursday 7:00pm

OTHER NATURE LINKS

Louisville Audubon Society	http://www.audubon.org/states/ky
Wild Ones	http://www.for-wild.org/chapters/louisville/

Upcoming Events - Spring 2010

Invasive Plant Hike Saturday, March 6, 10:30am to 12:30

Think of this as a reverse wildflower walk. If you want to continue to admire your favorite wildflowers, you may want to learn more about these exotic invaders that threaten to displace them. Kentucky's top ten "most unwanted" may not be pictured in the Post Office, but they are quite insidious.

Cost is a donation to the Nature Center. Pre-registration appreciated.

Teacher Open House Saturday, March 6th, 1pm to 3 pm

Calling all public & private school teachers, home school teachers, & scout or other youth group leaders! This is your chance to take a peek at the educational programs offered at the Nature Center (without a gazillion kids along!). Bring your family & join in the fun as you participate in various hands-on activities selected from our programs, chill out at the bird blind, hike the trails & much more. Refreshments will be served.

Free! Pre-registration not required.

Bourbon Dinner Fundraiser Monday, March 15, 6:30pm at Limestone Restaurant

Silent Auction & Social Hour beginning at 6:30pm, Bourbon Tasting & dinner to follow.

\$65 for Members & for tables of six or more, \$75 all others. Reservations & pre-payment required. All proceeds benefit the Louisville Nature Center.

Nature Explore Families' Club with Jefferson Memorial Forest (JMF)

Have you ever stood with your child under a majestic tree & admired its beauty? Have you & your child shared the fun of hunting for leaf shapes or going on a nature treasure hunt? Research shows that experiences like these help children build lasting connections to the natural world & to the adults with whom they share these adventures. **Come join the fun of outdoor adventures with the Nature Explore Families' Club!**

Back to Nature Family Club Program (JMF) Saturday, March 20th, 9:30 to 11:30

For our 1st Family Club program, come participate to get your family outdoors & experiencing nature together! Cost \$6 per child, ages 3-5. Pre-registration appreciated.

Night Sky Program Saturday, March 20, 8:00pm

Join us for an exciting study of the night sky led by the Louisville Astronomical Society. View star clusters, the Moon, & planets in a way not usually seen with the naked eye! Telescopes & warm treats provided. Dress for the weather. In case of clouds or rain, the program will be rescheduled for March 27th.

Cost is a donation to the Nature Center. Pre-registration appreciated.

X-Stream Cleanup Saturday, March 27, 9am to noon

LNC site will clear invasive species. No skills required; bring your gloves & tools. Call LNC at 458-1328 to sign-up.

Creating a Natural Landscape with Native Plants Tuesday March 30, 7pm, repeat April 6, 10am

Phyllis Fitzgerald will present ideas & suggestions for creating a natural, low-maintenance landscape using native plants. Native plants are hardy & easy to grow, can tolerate drought & extreme weather, & are subject to far fewer garden pests than many cultivars. With their deep root systems, they are ideal for rain gardens, & bring birds & butterflies to your garden. Cost is a donation to the Nature Center. Pre-registration appreciated.

Feathered Nests Bird Program Saturday, April 3, 9:30am to 11:30am

It's nesting time so many birds are very busy finding just the right building materials for their nests. Find out what they need to make a nest & try your hand at making your own. We'll also take a hike to find nesting sites in the Preserve. Cost \$6 for ages 8 & up. Reservations appreciated.

Native Plant Sale & Garden Expo Saturday, May 8, from 9am to 4pm

Many varieties of native plants will be on sale. Garden experts from around the county will be here with their environmentally friendly & nature loving products & services. Presentations will be held throughout the day. Fun, food, crafters & more. Call 458-1328 or email LNC@bellsouth to request application.

Trip to Jeneen Wiche's Farm Sunday, May 16 1:30 to 3:30pm

Join us for a tour of local TV & radio gardening expert's farm. The day will include lunch & a presentation by Jeneen. Cost is \$15 for members/\$20 for non-members. Registration required. Call the Nature Center at 458-1328 to register or to get more details.

Keep an eye our website at www.louisvillenaturecenter.org
or call the Louisville Nature Center at 458-1328, 9am – 4pm Monday through Saturday.

Proposed Plants for Louisville Nature Center Spring 2010 Sale

Sun-Loving		Sun-Loving	
Name		<i>Sisyrinchium angustifolium</i>	Blue-eyed Grass
<i>Agrostis perennans</i>	Autumn Bentgrass	<i>Solidago nemoralis</i>	Gray Goldenrod
<i>Allium cernuum</i>	Nodding Wild Onion	<i>Solidago rigida</i>	Stiff Goldenrod
<i>Amsonia tabernaemontana</i>	Eastern Bluestar	<i>Sorghastrum nutans</i>	Indian Grass
<i>Andropogon gerardii</i>	Big Bluestem	<i>Sporobolus heterolepis</i>	Prairie Dropseed
<i>Aquilegia canadensis</i>	Columbine	<i>Tripsacum dactyloides</i>	Eastern Gamma Grass
<i>Asclepias incarnata</i>	Swamp Milkweed	<i>Verbesina alternifolia</i>	Yellow Wingstem
<i>Asclepias syriaca</i>	Common Milkweed	<i>Vernonia gigantea</i>	Ironweed
<i>Asclepias tuberosa</i>	Butterfly Milkweed		
<i>Aster laevis</i>	Smooth Blue Aster	Shade-loving	
<i>Aster novae-angliae</i>	New England Aster		
<i>Aster sericeus</i>	Silky Aster	<i>Adiantum pedatum</i>	Maidenhair Fern
<i>Baptisia alba</i>	White Wild Indigo	<i>Anemone thalictroides</i>	Rue Anemone
<i>Baptisia australis</i>	Blue Wild Indigo	<i>Aquilegia canadensis</i>	Columbine
<i>Blephilia hirsuta</i>	Hairy Wood Mint	<i>Arisaema triphyllum</i>	Jack-in-the-Pulpit
<i>Bouteloua curtipendula</i>	Side-oats Grama	<i>Asarum canadensis</i>	Wild Ginger
<i>Carex frankii</i>	Frank's Sedge	<i>Athyrium filix-femina</i>	Lady Fern
<i>Carex vulpinoidea</i>	Fox Sedge	<i>Delphinium tricorne</i>	Larkspur
<i>Chasmanthium latifolium</i>	River Oats	<i>Dennstaedtia punctiloba</i>	Hayscented Fern
<i>Coreopsis tripteris</i>	Tall Tickseed	<i>Dicentra cucullaria</i>	Dutchman's Breeches
<i>Dalea purpurea</i>	Purple Prairie Clover	<i>Dodecatheon meadia</i>	Shooting Star
<i>Desmanthus illinoensis</i>	Illinois Bundleflower	<i>Erythronium americanum</i>	Trout Lily
<i>Echinacea pallida</i>	Pale Purple Coneflower	<i>Geranium maculatum</i>	Wild Geranium
<i>Echinacea purpurea</i>	Purple Coneflower	<i>Hepatica acutiloba</i>	Hepatica
<i>Elymus hystrix</i>	Bottlebrush Grass	<i>Iris cristata</i>	Dwarf Crested Iris
<i>Eryngium yuccifolium</i>	Rattlesnake Master	<i>Mertensia virginica</i>	Blue Bells
<i>Eupatorium coelestinum</i>	Mist Flower	<i>Onoclea sensibilis</i>	Sensitive Fern
<i>Eupatorium fistulosum</i>	Joe-Pye Weed	<i>Osmunda claytonii</i>	Interrupted Fern
<i>Eupatorium perfoliatum</i>	Boneset	<i>Phlox divaricata</i>	Forest Phlox
<i>Helenium autumnale</i>	Sneezeweed	<i>Podophyllum peltatum</i>	Mayapple
<i>Helianthus angustifolius</i>	Narrow-leaved Sunflower	<i>Polemonium reptans</i>	Jacob's Ladder
<i>Helianthus hirsutus</i>	Rough-leaved Sunflower	<i>Polystichum acrostichoides</i>	Christmas Fern
<i>Helianthus mollis</i>	Ashy Sunflower	<i>Sanguinaria canadensis</i>	Bloodroot
<i>Helianthus tuberosa</i>	Jerusalem artichoke	<i>Smilacina racemosa</i>	Solomon's Seal
<i>Hibiscus moscheutos</i>	Swamp Hibiscus	<i>Stylophorum diphyllum</i>	Wood Poppy
<i>Hypericum sphaerocarpum</i>	St. John's-wort	<i>Tiarella cordifolia</i>	Foam Flower
<i>Juncus effusus</i>	Soft Rush	<i>Uvularia sessilifolia</i>	Bellwort
<i>Lespedeza capitata</i>	Bush clover	<i>Viola pensylvanica</i>	Yellow Violet
<i>Liatris spicata</i>	Dense Blazing Star		
<i>Lobelia cardinalis</i>	Cardinal Flower	Trees, Shrubs and Vines	
<i>Lobelia siphilitica</i>	Great Blue Lobelia		KY Coffee Tree
<i>Lobelia spicata</i>	Spiked Lobelia	<i>Amelanchier canadensis</i>	Shadblow Serviceberry
<i>Ludwigia alternifolia</i>	Rattlebox	<i>Aronia melanocarpa</i>	Black Chokeberry
<i>Manfreda virginica</i>	False Aloe	<i>Asimina triloba</i>	Pawpaw
<i>Mimulus alatus</i>	Monkeyflower	<i>Cephalanthus occidentalis</i>	Buttonbush
<i>Monarda fistulosa</i>	Bee Balm	<i>Cercis canadensis</i>	Redbud
<i>Opuntia humifusa</i>	Prickly Pear Cactus	<i>Cladrastis lutea</i>	Yellowwood
<i>Panicum virgatum</i>	Prairie Switchgrass	<i>Diospyros virginiana</i>	Persimmon
<i>Parthenium integrifolium</i>	Wild Quinine	<i>Euonymus americana</i>	Hearts-a-bursting-with-love
<i>Penstemon digitalis</i>	Foxglove Beardtongue	<i>Euonymus atropurpurea</i>	Wahoo
<i>Penstemon hirsutus</i>	Hairy Beardtongue	<i>Hypericum frondosum</i>	Shrubby St. John's-wort
<i>Pycnanthemum incanum</i>	Hoary Mt. Mint	<i>Ilex verticillata</i>	Winterberry Holly
<i>Pycnanthemum tenuifolium</i>	Slender Mt. Mint	<i>Juniperus virginicus</i>	Eastern Red Cedar
<i>Ratibida pinnata</i>	Gray-Headed Coneflower	<i>Lindera benzoin</i>	Spicebush
<i>Rudbeckia fulgida</i>	Orange Coneflower	<i>Lonicera sempervirens</i>	Trumpet Honeysuckle
<i>Rudbeckia triloba</i>	Brown-eyed Susan	<i>Nyssa sylvatica</i>	Black Gum
<i>Schizachyrium scoparium</i>	Little Bluestem	<i>Oxydendrum arboreum</i>	Sourwood
<i>Scutellaria incana</i>	Downy Skullcap	<i>Quercus macrocarpa</i>	Bur Oak
<i>Senecio pauperulus</i>	Meadow Groundsel	<i>Rhus aromatica</i>	Fragrant Sumac
<i>Senna marilandica</i>	Wild Senna	<i>Rosa palustris</i>	Swamp Rose
<i>Silene regia</i>	Royal Catchfly	<i>Sambucus canadensis</i>	Elderberry
<i>Silphium laciniatum</i>	Compassplant	<i>Symphoricarpos orbiculatus</i>	Coralberry
<i>Silphium pinnatifidum</i>	Cut-leaf Prairie Dock	<i>Viburnum lentago</i>	Nannyberry
<i>Silphium trifoliatum</i>	Whorled Rosinweed	<i>Viburnum prunifolium</i>	Blackhaw Viburnum



Louisville Nature Center

& Beargrass Creek State Nature Preserve

3745 Illinois Avenue · Louisville, KY 40213
 www.louisvillenaturecenter.org

Phone: (502) 458-1328
 LNC@bellsouth.net

Non Profit Org.
 U.S. Postage
PAID
 Louisville, KY
 Permit No. 1156

Louisville Nature Center Membership Form

With your LNC membership, you'll receive our quarterly newsletter in your mailbox and discounts on family nature programs, adult workshops, birthday parties, and nature camps in the spring and summer. Many of our education programs and guided hikes are offered free to members. In addition to wonderful membership privileges, you'll get satisfaction from making a positive contribution toward effective nature education in our community. What are you waiting for – become a member today! If you are already an LNC member, please check the renewal date on the mailing label and continue to show your support when the time comes. Mail to: 3745 Illinois Ave Louisville KY 40213

Business \$500 Business \$250 Steward \$100 Family \$45

Individual \$30 Senior \$25 Teacher / Student \$20

Name _____

Address _____

City _____

State _____

Zip Code _____

Email _____

Phone Number _____